


PLOSION
de Salon



CREAM ESSENCE

Refresh and invigorate your beauty
with 10 seconds of full skin care.

For women who are highly conscious of their beauty
and are willing to find the time for pursuing it.
The ultimate skincare product created from the culmination
of technologies developed by PLOSION.
It's the cream essence that completes your skincare treatment
in just 10 seconds.
Ideal for providing the care required for adult skin,
PLOSION CREAM ESSENCE is an experience
that lifts both face and heart.
Feel the joy of PLOSION



Carbonated beauty technology condensed into a single drop.

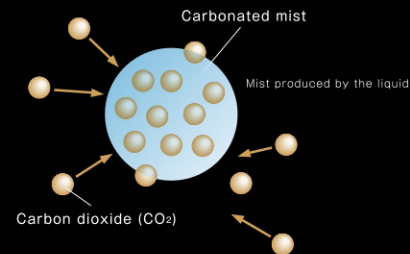
"CO₂ Retention Method" dissolves carbonic acid to yield three times the average concentration*.

Highly compatible with carbonic acid, PLOSION cosmetics features the "CO₂ Retention Method", a unique process that allows a large volume of carbonic acid to be dissolved in a liquid. The mist produced by the liquid contains three times the average concentration* of carbonic acid. This high-concentration carbonated mist is unlike any spray you've experienced before.

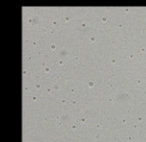
"Special Emulsification Technology" A dissolving penetration that deeply moisturizes the skin.

This skincare product enhances affinity to the skin by creating highly concentrated, ultrafine oil particles. Rich in moisture when applied, PLOSION CREAM ESSENCE changes to a dense touch as you blend it into your skin. The combination of penetrating your skin with water and oil helps maintain an abundance of moisture over a long period of time.

CO₂ Retention Method

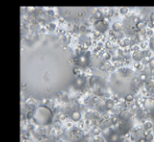


Special Emulsification



Smaller particles for even better skin penetration^{*2}

Normal Emulsification



Large particles tend to remain on the surface of the skin

*1 Compared to MTG products
*2 To the horny cell layer



CREAM ESSENCE

A single essence that provides care for everything from skin moisturization to tension.

Your skin dries, wrinkles and loses tension with the increase of years. For these concerns, we present a beauty essence for moisturized aging care¹ of mature skin.

The essence's beauty ingredients quickly penetrate the skin², providing an abundance of moisture to help increase skin tension and create enchantingly smooth skin. It even alleviates drying to make fine wrinkles unnoticeable³. PLOSION CREAM ESSENCE is a special product that satisfies your skincare needs.

<PLOSION's Unique Ingredients>

Lamella chain ceramide⁴: Maintains moisturization throughout the applied area

Fullerenes vitamin C complex⁵: Stimulates the natural functions of the skin and maintains tension from within²

<1 Product for 8 Specific Roles>

Lotion	Beauty Essence	Emulsion	Cream
Eye Cream	Massage Cream	Mask	Cosmetic Foundation

PLOSION FACE CREAM ESSENCE 100mL ¥ 5,500 (excluding tax)

¹Treatment proper for age ²To the horny cell layer ³Efficacy evaluation testing completed

⁴Alce barbadensis leaf extract / hydrolyzed slurghen / ceramide 2 / ceramide 3 (moisturizing)

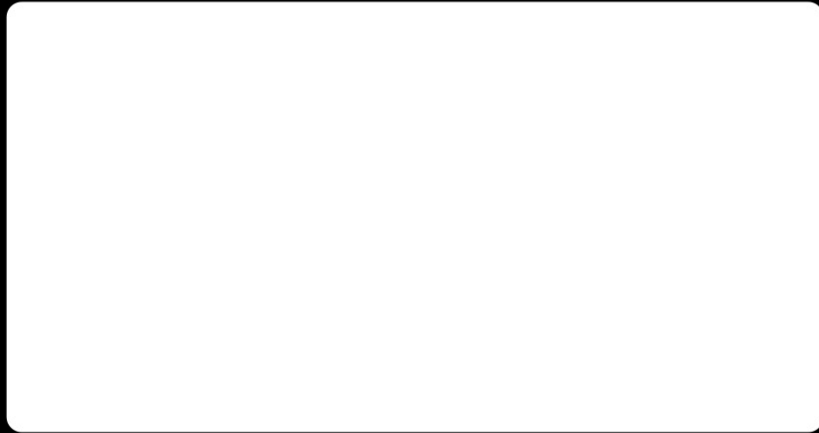
⁵Fullerenes / ascorbyl tetraisopalmitate (toning/moisturizing)



CARBO-MIST UNIT

Enjoy a highly concentrated carbonated mist treatment at home.

PLOSION CARBO-MIST UNIT ¥29,800(excluding tax)



·Specifications are subject to change without notice for ongoing product modifications and improvements.
·The color of the product may slightly differ from that in the photos.*

[Manufactured for] **MTG Co., Ltd.**

MTG No.2 HIKARI Bldg., 4-13 Honjindori, Nakamura-ku, Nagoya-shi, Aichi Prefecture, 453-0041, Japan