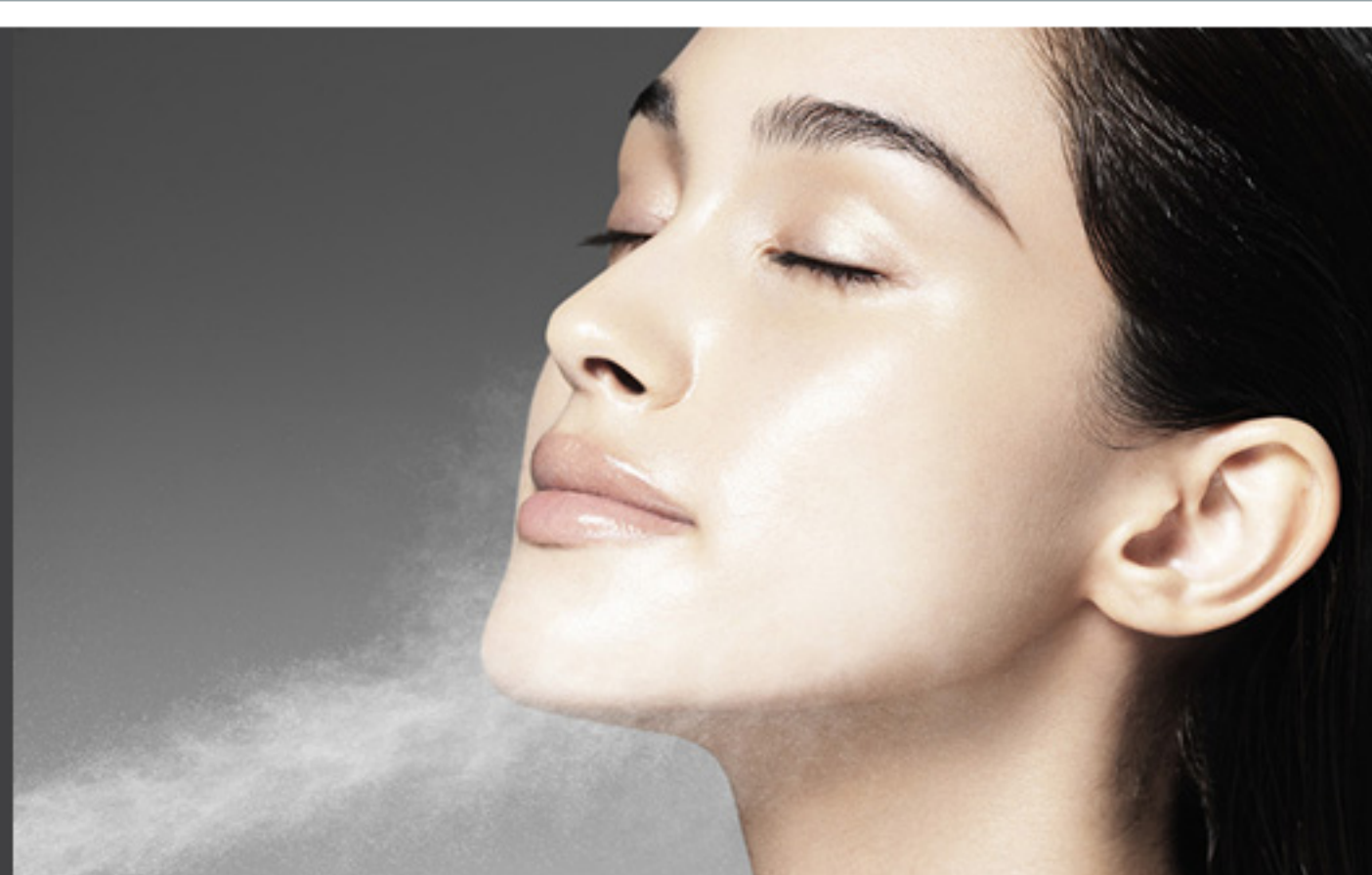


**PLOSION**  
*de Salon*

FACE  
ESSENTIAL  
LOTION



## For luxuriously resilient skin, each time you spray your skin.

A face lotion for those who have skin concerns associated with aging.

An exquisite texture that lets you feel luxurious moisture without the stickiness. The lotion features the latest technology for delivering moisture to the skin and contains a rich selection of carefully selected ingredients.

Continued use leads to springy, resilient skin.

[Standard Use] Apply a half-dollar size dollop by hand, morning and night for approximately 1 month.

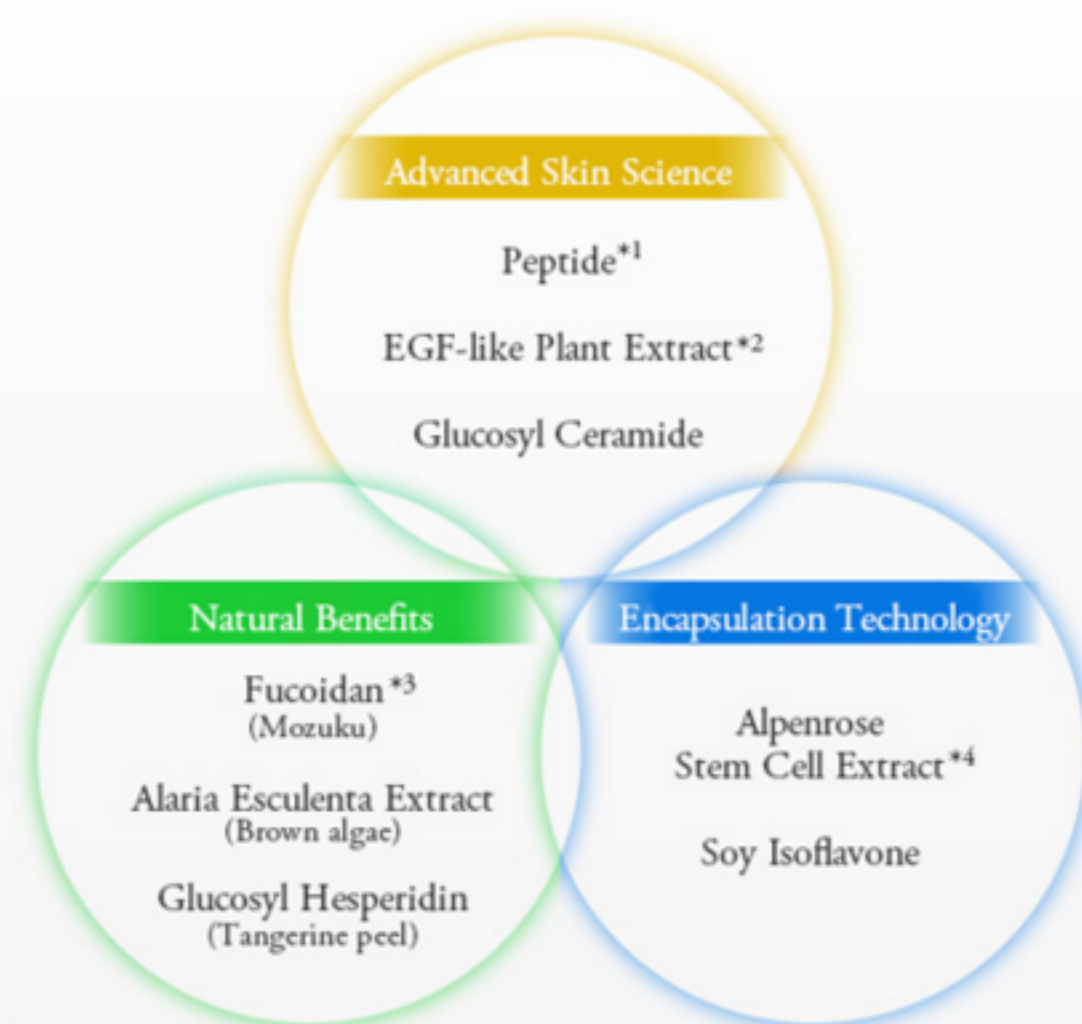
Apply a 10-second spray with the carbonated mist unit, morning and night for approximately 1 month.



## A Fusion of Science & Nature

An outstanding fusion of natural blessings and the ingredients and technologies from cutting edge dermatology.

The lotion is not only gentle on your skin, but provides it moisture and suppleness.



\*1 Palmitoyl tripeptide-5

\*2 Ascophyllum nodosum extract

\*3 Cladosiphon novae-caledoniae polysaccharide

\*4 Rhododendron ferrugineum leaf cell culture extract

Moisturizing Ingredients

Product name	PLOSION FACE ESSENTIAL LOTION
Price	¥8,500 (excl. tax) ¥9,180 (Incl. tax)
Volume	118mL
Ingredients	Water, Butylene Glycol, Alcohol, Dipropylene Glycol, Pentylene Glycol, Dipotassium Phosphate, Potassium Phosphate, Sorbitol, Betaine, Raffinose, PPG-6-Decyltetradeceth-30, PEG-20, Coriandrum Sativum (Coriander) Seed Oil, Caprylic/Capric Triglyceride, Ascophyllum Nodosum Extract, Glycerin, Ubiquinone, Glucosyl Hesperidin, Arginine, Isomalt, Dextrin, Alaria Esculenta Extract, Glucosyl Ceramide, Cladosiphon Novae-Caledoniae Polysaccharide, Algae Extract, Polysorbate 80, Lecithin, Palmitoyl Tripeptide-5, Rhododendron Ferrugineum Leaf Cell Culture Extract, Sodium Benzoate, Soy Isoflavones, Lactic Acid, Phenoxyethanol



Product name	PLOSION FACE ESSENTIAL LOTION <b>for Professional</b>
Price	¥24,800(excl. tax) ¥26,784 (Incl. tax)
Volume	490mL
Ingredients	Water, Butylene Glycol, Alcohol, Dipropylene Glycol, Pentylene Glycol, Dipotassium Phosphate, Potassium Phosphate, Sorbitol, Betaine, Raffinose, PPG-6-Decyltetradeceth-30, PEG-20, Coriandrum Sativum (Coriander) Seed Oil, Caprylic/Capric Triglyceride, Ascophyllum Nodosum Extract, Glycerin, Ubiquinone, Glucosyl Hesperidin, Arginine, Isomalt, Dextrin, Alaria Esculenta Extract, Glucosyl Ceramide, Cladosiphon Novae-Caledoniae Polysaccharide, Algae Extract, Polysorbate 80, Lecithin, Palmitoyl Tripeptide-5, Rhododendron Ferrugineum Leaf Cell Culture Extract, Sodium Benzoate, Soy Isoflavones, Lactic Acid, Phenoxyethanol

