

Re.Fa

ACTIVE



ReFa ACTIVE FIT



The ultimate conditioning
for your face and body.

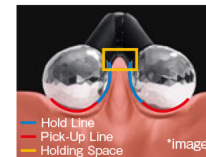
1 Designed to fit anywhere on your body for deep kneading and conditioning.

The deep kneading action of the ReFa ACTIVE FIT targets the muscles and skin alike for the ultimate in comfort and radiance.



■ Double Drainage* Rollers

Precisely engineered diamond-cut rollers lift and grip the skin for deep kneading that conditions the entire body.



Skin is drawn in at the pick-up line and gripped at the hold line for deep kneading. The holding space helps draw in the skin even further.



The size, distance and angle of the rollers are engineered to fit anywhere on your face and body.

*Drainage is a technique that estheticians often perform, and does not express any effect the product has on your body.

2 A solar panel converts available light into microcurrent.

A large solar panel in the center of the device generates a very mild microcurrent by drawing in available light.

What is a microcurrent?

A microcurrent is a very mild electrical current that closely resembles the biological current produced by the body.



3 Designed for ease of use on the face and body.

The size is designed to perfectly fit every complex line of your face and body.

■ Waterproof Construction

Conforms with JIS standards (equivalent to IPX7). This product can be used safely during your bath time.



■ Platinum Coating

The surface of the rollers are coated in platinum to protect your delicate skin.

ReFa ACTIVE



Condition your skin
to bring out its beauty.

1 Apply as much pressure as you need to condition and help restore the look of your skin and muscles.

After a hard workout or sports activity, reward your body with Wide-Fit Pressure Functionality that kneads your muscles with care and comfort.



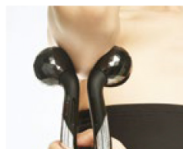
Replicates the 'grasp and squeeze' action inspired by a sports trainer's massage techniques.

Flexible Handle

The flexible handle design allows you to easily change the space between the rollers in accordance with the part of the body being targeted. By varying the degree to which you press down on the handle, you can easily control the amount of pressure administered.



Adjust the width between 12.5 mm to 45 mm.



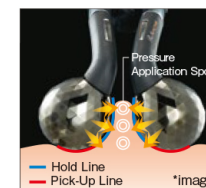
Wide-Fit Pressure Functionality administers pressure from the skin's surface down to the muscles.

2 Condition your skin with kneading.

Double Drainage* Rollers

The diamond-cut double drainage* rollers grip the skin with precision, and can be moved along complex contours of the body to knead the targeted area effectively.

*Drainage is a technique that estheticians often perform, and does not express any effect the product has on your body.



The rollers are structured to draw in the skin at the pick-up line and grip it at the hold line for deep kneading.

3 A solar panel converts available light into microcurrent.

Generates a very mild microcurrent by drawing in available light with two solar panels fixed on either side of the handle.

What is a microcurrent?

A microcurrent is a very mild electrical current that closely resembles the biological current produced by the body.



Waterproof Construction

Conforms with JIS standards (equivalent to IPX7). This product can be used safely during your bath time.



Titanium Coating

The rollers are coated with titanium, which cannot be easily scratched and has a high resistance to perspiration.

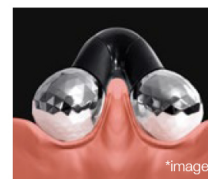
ReFa ACTIVE DIGIT



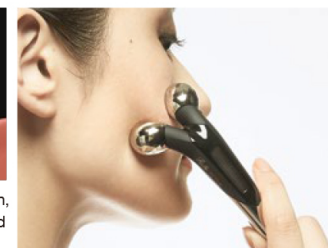
Relax your expression
from deep within your muscles.

1 Fits every contour of the face for deep and precise kneading of the mimetic muscles.

The structure and size are precisely engineered to replicate the soothing hand techniques of professional estheticians. Mimetic muscle kneading is enabled by applying optimal pressure to your skin.

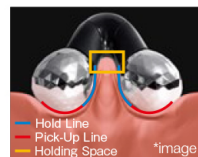


The roller adheres to the skin, drawing it in for a direct and precise kneading.

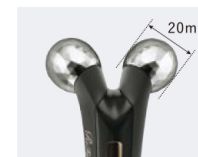


Double Drainage* Rollers

With meticulous attention to detail, the diamond-cut rollers adhere to every curve and contour for deep kneading.



The rollers are structured to draw in the skin at the pick-up line and grip it at the hold line for deep kneading. The holding space helps to draw in the skin even further.



With their smooth gliding motion, the rollers are designed to apply the optimal amount of pressure to your skin.

*Drainage is a technique that estheticians often perform, and does not express any effect the product has on your body.

2 A solar panel converts available light into microcurrent.

Generates a very mild microcurrent by drawing in available light with a solar panel fixed in the handle.

What is a microcurrent?

A microcurrent is a very mild electrical current that closely resembles the biological current produced by the body.



3 Compact size, easy to carry

Its compact size makes it easy to carry for use anytime, anywhere – at home, at work or in transit.

Waterproof Construction

Conforms with JIS standards (equivalent to IPX7). This product can be used safely during your bath time.



Platinum Coating

The surface of the rollers are coated in platinum to protect your delicate skin.



HOW TO USE



ReFa ACTIVE FIT

Use it on your facial and body contours to help visibly improve skin texture and tone.



Roll along your jawline, from the tip of your chin up to under your ear.



Roll from the corners of your mouth toward your temple, focusing on the contours of your cheeks.



Roll along your chest under your collarbone for a beautiful-looking décolleté.



Roll over your calves evenly, from your ankle to under your knee.



ReFa ACTIVE

Before or after exercise or even during work, treat yourself to the kind of care your body really needs.



Roll the device back and forth in the area between your wrist and elbow. Start from the inner side and gradually move the device outward.



Roll the device diagonally to achieve an ideal waist. Roll so as to lift the skin up.



Roll the device from your ankle to the back of your knee. Grasp and squeeze your calf thoroughly.



Roll the device from below the corner of your mouth, along the facial contours. Roll so as to lift up your skin.



ReFa ACTIVE DIGIT

For a brilliant and healthy look, add mimetic muscle conditioning to your routine.



Roll up and down, as if enclosing the line from your chin to the bottom of your ear.



Start from the corner of your mouth and smoothly roll below your cheekbone up to the front of your ear.



Gently roll upward as if lifting your forehead, from between your brows toward your hairline.



Slowly and carefully roll over the frontal muscles of your forehead.



ReFa ACTIVE FIT

¥23,800 (Excluding tax)

【Model Number】AR-AA03

Items Included: Instruction Manual,
Warranty Certificate, Guidebook, Pouch, Cleaning Cloth
Size: Approx. 83mm×159mm×55mm
Materials: ABS, acrylic, polycarbonate, elastomer, stainless steel,
polyacetal, nylon, silicone rubber, phosphor bronze, platinum
Weight: Approx. 145g



ReFa ACTIVE WF

¥32,000 (Excluding tax)

【Model Number】RF-AT2228B-N

Items Included: Instruction Manual,
Warranty Certificate, Guidebook, Pouch,
Cleaning Cloth
Size: Approx. 105mm×171mm×61mm
Materials: ABS, acrylic, stainless steel,
nylon, silicone rubber, titanium
Weight: Approx. 285g



ReFa ACTIVE DIGIT

¥18,800 (Excluding tax)

【Model Number】BLACK／RF-DG2151B-N
WHITE／RF-DG2151B-W

Items Included: Instruction Manual,
Warranty Certificate, Guidebook, Pouch,
Cleaning Cloth
Size: Approx. 50mm×148mm×33mm
Materials: ABS, acrylic, stainless steel,
silicone rubber, POM, platinum
Weight: Approx. 40g



Notes

Read the instruction manual carefully and use this product correctly.



Safety Precautions

The following persons should not use this product.
(Such persons using this product could have an accident or skin/body problems.)

○Persons prone to metal allergies ○Persons with sensory abnormalities of the skin ○Persons with infected or inflamed skin ○Women in the early unstable stages of pregnancy or immediately after childbirth, or women who are pregnant but not in good health (such as pregnant hypertension syndrome) ○Persons with a bleeding disorder (such as hemophilia) ○Persons in poor health ○Persons who form purple spots or bruise easily ○Persons taking medications ○Persons who have been drinking alcohol ○Persons who are extremely fatigued

All copyrights whatsoever for information on this product (documents, images, video, audio, design, etc.) are the property of MTG Co., Ltd. Copying, using, duplicating, altering etc. any such information without the express written permission of MTG Co., Ltd. is prohibited by law. Also, posting on the Internet is prohibited regardless of the purpose and method used.

* The color of the product may slightly differ from that in the photos.

* Product specification is subject to change without notice in order to improve product performance.

MTG

We have many dreams

[Manufactured for] MTG Co., Ltd.

MTG No.2 HIKARI Bldg., 4-13 Honjindori, Nakamura-ku,
Nagoya-shi, Aichi Prefecture, 453-0041, Japan